

# VILLAGES OF WINDSOR PLAT FIVE

A PLANNED UNIT DEVELOPMENT BEING A PART OF VILLAGES OF WINDSOR PUD  
 BEING A REPLAT OF A PORTION OF BLOCKS 37 AND 42, "PALM BEACH FARMS COMPANY PLAT NO. 3, AS RECORDED IN PLAT BOOK 2, PAGES 45 THROUGH 54,  
 OF THE PUBLIC RECORDS OF PALM BEACH COUNTY, FLORIDA, LYING IN SECTIONS 5 AND 8, TOWNSHIP 45 SOUTH, RANGE 42 EAST, PALM BEACH COUNTY, FLORIDA

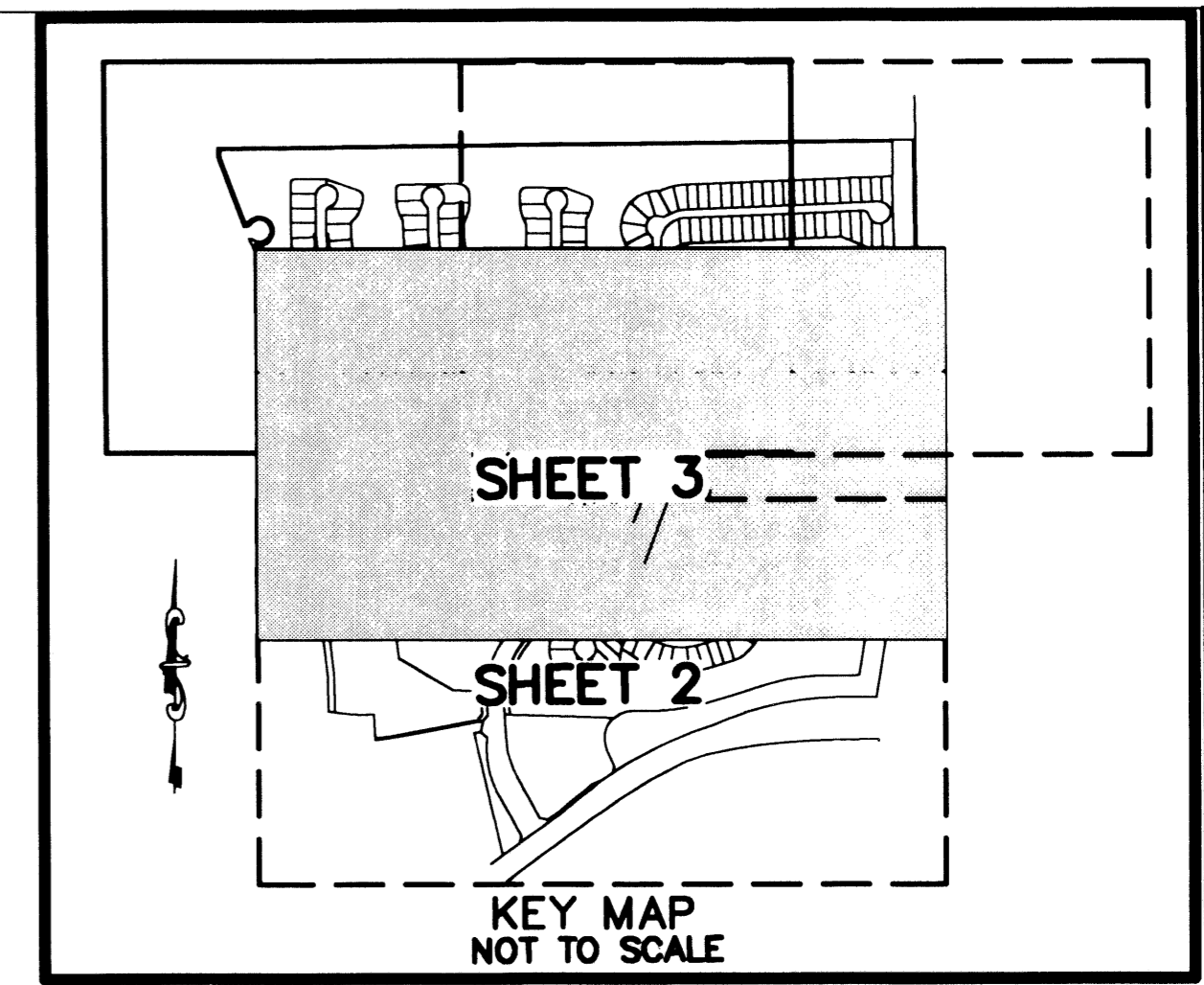
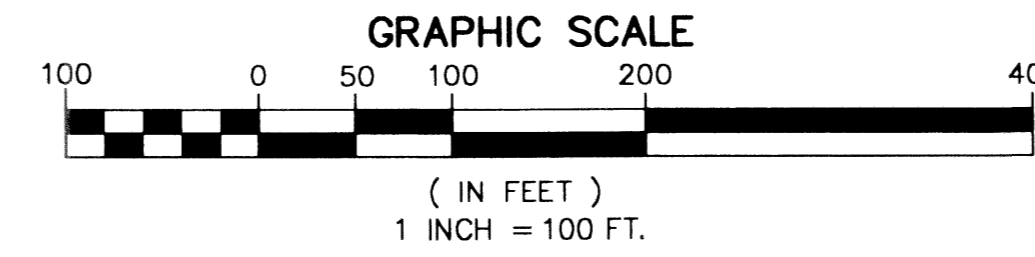
THIS INSTRUMENT PREPARED BY  
 DAVID P. LINDLEY

OF  
**CAULFIELD and WHEELER, INC.**  
 SURVEYORS - ENGINEERS - PLANNERS  
 7301-A WEST PALMETTO PARK ROAD, SUITE 100A  
 BOCA RATON, FLORIDA 33433 - (561)392-1991  
 OCTOBER - 2002

## NOTES COORDINATES, BEARINGS AND DISTANCES

COORDINATES SHOWN ARE GRID  
 DATUM = NAD 83 1990 ADJUSTMENT  
 ZONE = FLORIDA EAST  
 LINEAR UNIT = US SURVEY FEET  
 COORDINATE SYSTEM 1983 STATE PLANE  
 TRANSVERSE MERCATOR PROJECTION  
 ALL DISTANCES ARE GROUND  
 SCALE FACTOR = 1.0000195  
 GROUND DISTANCE X SCALE FACTOR = GRID DISTANCE  
 BEARINGS AS SHOWN HEREON ARE GRID DATUM, NAD 83 1990  
 ADJUSTMENT, FLORIDA EAST ZONE.  
 COORDINATES SHOWN ON THE CONTROL P.R.M.S MEET OR  
 EXCEED THE LOCAL ACCURACY REQUIREMENTS OF A 2  
 CENTIMETER GEODETIC CONTROL SURVEY.

N89°26'07"E (PLAT BEARING) 00°24'17" = BEARING ROTATION  
 N89°01'50"E (GRID BEARING) (PLAT TO GRID)  
 NORTH LINE OF THIS PLAT COUNTERCLOCKWISE

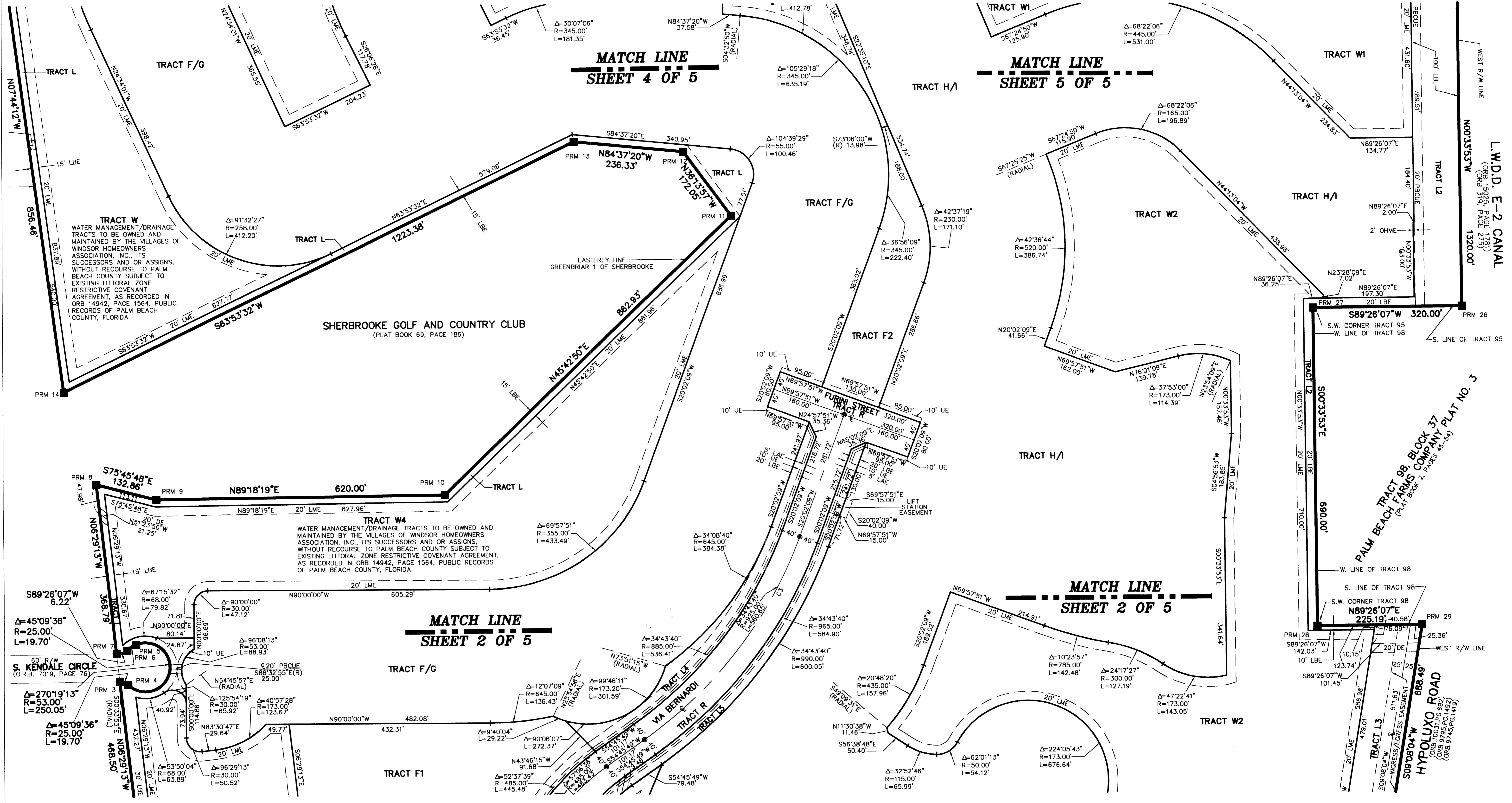


**39**

STATE OF FLORIDA  
 COUNTY OF PALM BEACH  
 THIS PLAT WAS FILED FOR  
 RECORD AT \_\_\_\_\_ M.  
 THIS \_\_\_\_\_ DAY OF \_\_\_\_\_  
 A.D. 2003 AND DULY RECORDED  
 IN PLAT BOOK \_\_\_\_\_ ON  
 PAGES \_\_\_\_\_ AND \_\_\_\_\_

DOROTHY H. WILKEN  
 CLERK CIRCUIT COURT

BY: \_\_\_\_\_  
 DEPUTY CLERK



SUBDIVISION Villages of Windsor Pl. 5  
 BLOCK 100 PAGE 59 FLOOD MAP # 170 A  
 FLOOD ZONE B ZONING PUD  
 QUAD # 49 ZIP CODE 33461  
 SE  
 TAZ 1026  
 PUD NAME Villages of Windsor

SHEET 3 OF 5

MATCH LINE  
 SHEET 4 OF 5

MATCH LINE  
 SHEET 5 OF 5

MATCH LINE  
 SHEET 2 OF 5

MATCH LINE  
 SHEET 2 OF 5

PALM BEACH TRACT 98, BLOCK 37  
 (PLAT BOOK 2, PAGES 45-54)

HYPOLUXO ROAD  
 (ORL 10031, PG. 669)  
 (ORL 9795, PG. 149)  
 (ORL 9745, PG. 149)